	EQUIPAGGIAMENTI TECNICI LAVAGGIO	UGELLO ROTANTE ROTATING NOZZLE <b>UR20</b>	(I)	
			(GB)	<b>4</b>
				29/09/05

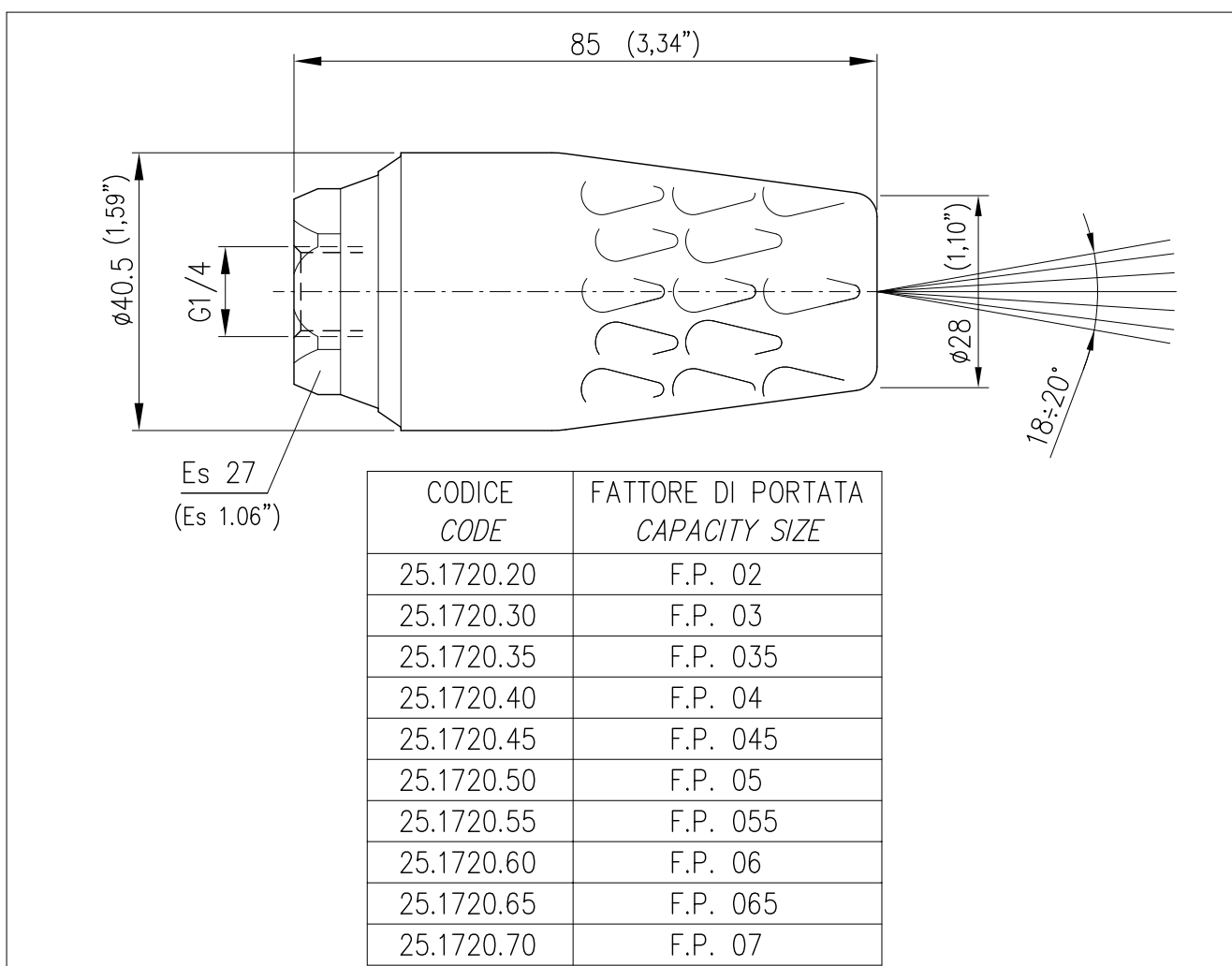


- ROBUSTA COSTRUZIONE IN OTTONE  
*STRONG BRASS STRUCTURE*
- SEDE E UGELLO IN CERAMICA AD ALTISSIMA RESISTENZA  
*HIGHLY SHOCK-RESISTANT CERAMIC SEAT AND NOZZLE*
- ALTO ASSORBIMENTO DEGLI URTI ACCIDENTALI GRAZIE ALLA PROTEZIONE IN PLASTICA.  
*HIGH ABSORPTION OF ACCIDENTAL BUMPS THANKS TO THE PLASTIC PROTECTION*

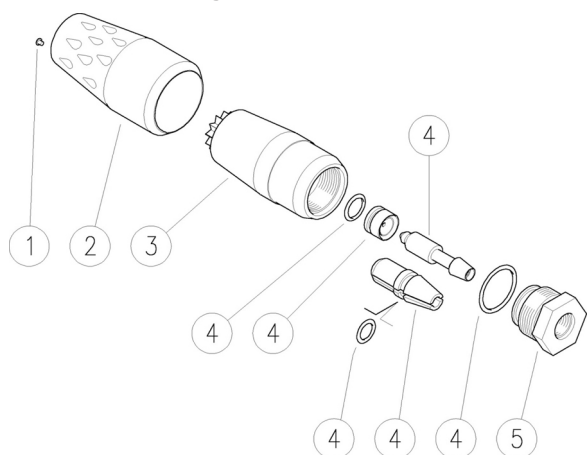
## CARATTERISTICHE TECNICHE SPECIFICATIONS

– PRESSIONE NOMINALE <i>RATED PRESSURE</i>	207 bar – 20.7 MPa (3000 psi)
– TEMPERATURA MASSIMA <i>MAX WORKING TEMPERATURE</i>	90° C (194 °F)
– PESO <i>WEIGHT</i>	0.33 Kg 11,63 OZ

## MISURE D'INGOMBRO OVERALL DIMENSIONS



25.1720.20 UR20-02 Ug.rot.200bar, ver.ch.  
 25.1720.30 UR20-03 Ug.rot.200bar, bianco  
 25.1720.35 UR20-035 Ug.rot.200bar, marr.  
 25.1720.40 UR20-04 Ug.rot.200bar, giallo sc.  
 25.1720.45 UR20-045 Ug.rot.200bar, blu



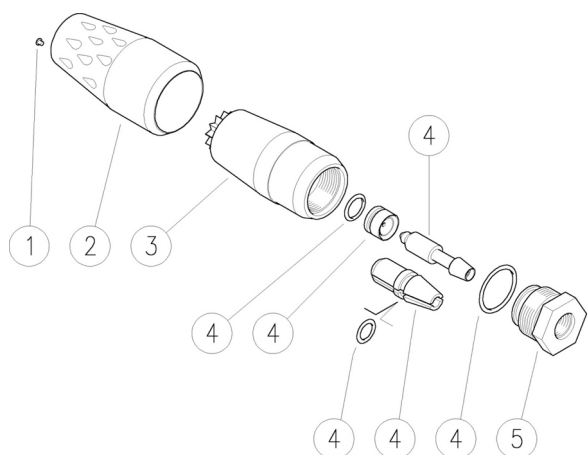
25.1720.50 UR20-05 Ug.rot.200bar, viola ch.  
 25.1720.55 UR20-055 Ug.rot.200bar, rosso sc.  
 25.1720.60 UR20-06 Ug.rot.200bar, ver.sc.  
 25.1720.65 UR20-065 Ug.rot.200bar, cel.  
 25.1720.70 UR20-07 Ug.rot.200bar, arancio

Pos.	Codice	Descrizione	Q.tà	K1	K2	K3	K4	
1	15.2000.30	Chiodo 03 bianco (1)	1					10
2	25.1721.85	Manopola UR20 nera	1					3
3	25.1722.31	Corpo UR20	1					2
4	25.1924.24	Kit ric. UR20.020 (2)	1					1
4	25.1788.24	Kit ric. UR20.03 (1)	1					1
4	25.1734.24	Kit ric. UR20.035 (3)	1					1
4	25.1733.24	Kit ric. UR20.04 (4)	1					1
4	25.1784.24	Kit ric. UR20.045 (5)	1					1
4	25.1785.24	Kit ric. UR20.05 (6)	1					1
4	25.1786.24	Kit ric. UR20.055 (7)	1					1
4	25.1747.24	Kit ric. UR20.06 (8)	1					1
4	25.1787.24	Kit ric. UR20.065 (9)	1					1
4	25.1789.24	Kit ric. UR20.07 (10)	1					1
5	25.1727.31	Raccordo G1/4F (3)	1					3
5	25.1901.31	Raccordo G1/4F (4)	1					3
5	25.1902.31	Raccordo G1/4F +An.OR (5)	1					3
5	25.1903.31	Raccordo G1/4F (6)	1					3
5	25.1904.31	Raccordo G1/4F (7)	1					3
5	25.1916.31	Raccordo G1/4F (8)	1					3
5	25.1905.31	Raccordo G1/4F (9)	1					3

(1) 25.1720.30 (2) 25.1720.20 (3) 25.1720.35 (4) 25.1720.40 (5) 25.1720.45  
 (6) 25.1720.50 (7) 25.1720.55 (8) 25.1720.60 (9) 25.1720.65 (10) 25.1720.70

25.1720.20 UR20-02 Rotat.nzl,200bar, green  
 25.1720.30 UR20-03 Rotat.nzl,200bar, white  
 25.1720.35 UR20-035 Rotat.nzl,200bar, brown  
 25.1720.40 UR20-04 Rotat.nzl,200bar, d.yellow  
 25.1720.45 UR20-045 Rotat.nzl,200bar, blue

25.1720.50 UR20-05 Rotat.nzl,200bar, l.purple  
 25.1720.55 UR20-055 Rotat.nzl,200bar, d.red  
 25.1720.60 UR20-06 Rotat.nzl,200bar, d.green  
 25.1720.65 UR20-065 Rotat.nzl,200bar, l.blue  
 25.1720.70 UR20-07 Rotat.nzl,200bar, orange



Pos.	P/N	Description	Q.ty	K1	K2	K3	K4	
1	15.2000.30	Stud, 03 white (1)	1					10
2	25.1721.85	Knob UR20, black	1					3
3	25.1722.31	Housing -UR20	1					2
4	25.1924.24	Spares kit -UR20.020 (2)	1					1
4	25.1788.24	Spares kit -UR20.03 (1)	1					1
4	25.1734.24	Spares kit -UR20.035 (3)	1					1
4	25.1733.24	Spares kit -UR20.04 (4)	1					1
4	25.1784.24	Spares kit -UR20.045 (5)	1					1
4	25.1785.24	Spares kit -UR20.05 (6)	1					1
4	25.1786.24	Spares kit -UR20.055 (7)	1					1
4	25.1747.24	Spares kit -UR20.06 (8)	1					1
4	25.1787.24	Spares kit -UR20.065 (9)	1					1
4	25.1789.24	Spares kit -UR20.07 (10)	1					1
5	25.1727.31	Coupling, 1/4 F Bsp (3)	1					3
5	25.1901.31	Coupling, 1/4 F Bsp (4)	1					3
5	25.1902.31	Coupling, 1/4 F Bsp +O-ring (5)	1					3
5	25.1903.31	Coupling, 1/4 F Bsp (6)	1					3
5	25.1904.31	Coupling, 1/4 F Bsp (7)	1					3
5	25.1916.31	Coupling, 1/4 F Bsp (8)	1					3
5	25.1905.31	Coupling, 1/4 F Bsp (9)	1					3

(1) 25.1720.30 (2) 25.1720.20 (3) 25.1720.35 (4) 25.1720.40 (5) 25.1720.45  
 (6) 25.1720.50 (7) 25.1720.55 (8) 25.1720.60 (9) 25.1720.65 (10) 25.1720.70



P.A. S.p.A.

Via Milano, 13  
42048 Rubiera, Reggio Emilia - Italy

Tel +39.0522.623611  
Fax +39.0522.629600

info@pa-etl.it

[www.pa-etl.it](http://www.pa-etl.it)



COMPANY WITH QUALITY MANAGEMENT  
SYSTEM CERTIFIED BY DNV  
= ISO 9001 =